

Optional Items

265022230G(01)



Air Compressor



Fume Extractor



Rotary Attachment



Technology Education Concepts
www.TECedu.com | 800-338-2238
info@TECedu.com

GCC E200 Desktop Laser Engraver So Simple, So Professional

Specification	
Laser	CO2 40W
Working Area	510 x 330mm
Max. Part Size (W x L x H)	525 x 340 x 20mm (with grid cutting table)
	493 x 341 x 95mm (without grid cutting table)
Max. Working Speed	20 IPS
CCD Camera	Standard
Working Table	Standard grid cutting table
Driver	DC servo motor
Focal Lens	Standard 1.5"
Max. Cutting Thickness	10mm
Control Panel	7" touch screen
Connection	Wi-Fi, USB Ethernet
Dimensions (W x L x H)	915 x 780 x 300mm
Optional	Rotary attachment, odor reduction, air compressor
Air Exhaust System	External exhaust system with minimum flow rate 300 m3/h (10594 ft3/h) is required, 2,500PA negative pressure (PURE-AIR PA-300 @ 4" exhaust port)

* Above specifications are subject to change without prior notice.



Representative



Technology Education Concepts
www.TECedu.com | 800-338-2238
info@TECedu.com



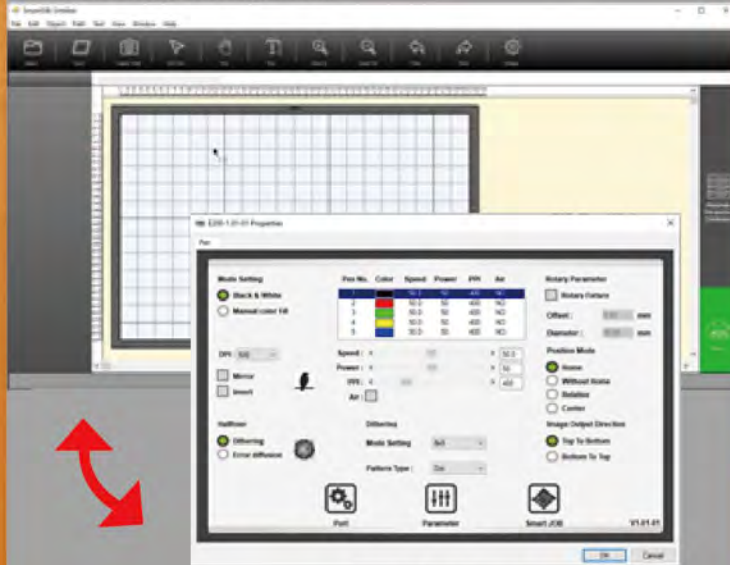
GCC Headquarters 4F-1., No.236, Fude 2nd Rd., Xizhi Dist., New Taipei City 22151, Taiwan
GCC China No.1, Chen Feng Road, Yushan, Kunshan, Jiangsu 215300, China
GCC Europe B.V. Eglantierbaan 43-45, 2908 LV, Capelle a/d IJssel, The Netherlands
GCC America, Inc 20453 E Valley Blvd. Walnut, CA 91789, USA



E200

- 510 x 330mm Desktop Laser Engraver
- 7" Touch Screen Control Panel
- CCD Camera
- Live Camera Preview
- Multifunction user interface for both beginners and advance users
- 20ips High Speed throughput
- Standard Water Chiller for high production
- Stamp mode with shoulder level function

SmartJOB app for beginners.



GCC driver for advanced users.



Desktop Laser Engraver E200

Simple but Professional

Multifunction user interface for both beginners and advance users.

Standard Water Chiller for Long-time Working

E200 desktop laser engraver comes with a standard water chiller to ensure machine efficiency.



Unmatchable Output Quality

GCC E200 takes your engraving and cutting to a level beyond other desktop laser engravers.



7" Large Touch Panel

With colorful intuitive 7" touchscreen interface, E200 desktop laser engraver can bring your inspiration to life.

Stamp Mode with Shoulder Level Function

E200 stamp mode with shoulder level function enables you to produce a professional stamp easily.



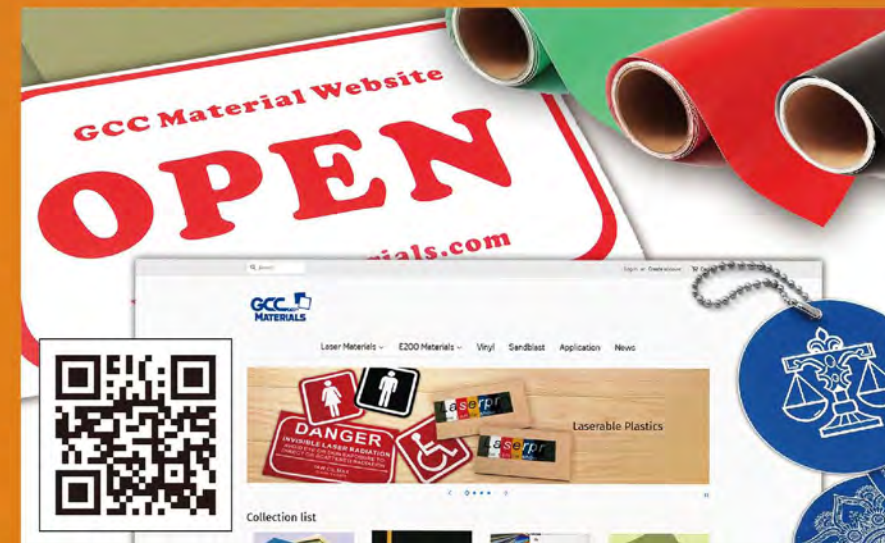
Live Camera Preview

E200's on board camera allows you to preview your design to make positioning simple and easy.



High Throughput for Unlimited Imagination

20ips Processing speed with DC servo motor to boost productivity while maintaining precision.



Free Bundle with GCC Materials to Start Your Business with Ease

Every E200 desktop laser engraver comes with free GCC Materials with barcode stickers. Camera can read the QR code and automatically set up the parameters according to different materials.

To purchase more laser materials, you are welcome to visit <https://gccwebshop.com>



Representative



Technology Education Concepts
www.TECedu.com | 800-338-2238
info@TECedu.com