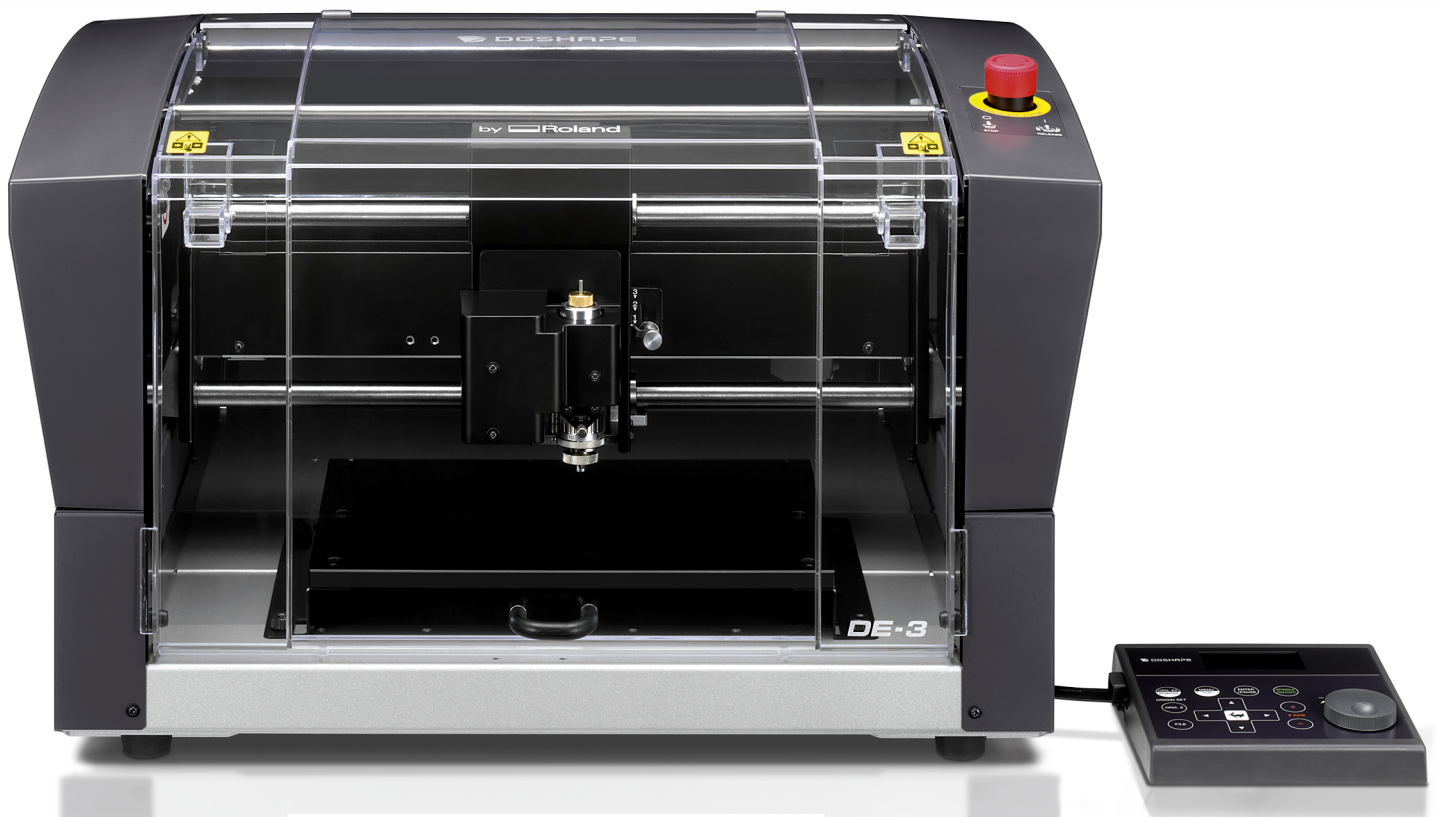


**OVER 30 YEARS OF  
ENGRAVING EXPERTISE**

Roland continues to break new ground in rotary engraving with the DGS SHAPE DE-3 that features laser-pointing technology, ethernet connectivity, automatic depth regulation and other intelligent enhancements.



**Academic Representative:**



**Technology Education Concepts**

1-800-338-2238 | [www.TECedu.com](http://www.TECedu.com) | [info@TECedu.com](mailto:info@TECedu.com)

by  **Roland**

# Precise. Productive. Profitable.

Automated features offer a simplified set-up and operation to quickly and precisely engrave delicate and tough materials.



## Fast Production

Advanced surface detection enables quick and simple set-up, while a 20,000 rpm DC brushless motor engraves at top speed.



## Laser Pointer

Automatically define the origin point and view a path preview for accurate personalization and engraving every time.



## User Replaceable Spindle

Easily-applied nose cones avoid scratches to delicate materials and deliver consistently precise results.



## Ethernet Connection

Machine operation can be managed remotely—offering LAN network connectivity for multiple machine engraving.



\*Optional vice shown

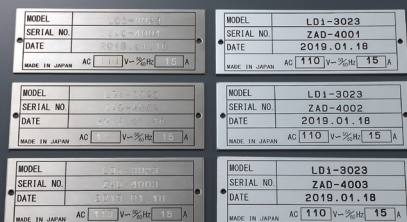
## Discover More Applications with DGSHAPE Engraving

Customize brass, aluminum, copper, engraving plastic, wooden items and more, with the speed, precision and ease of the powerful, compact DE-3.

Emergency power  
supply control room

Information System Management Office

INFORMATION CENTER  
Takashi James Fujimoto



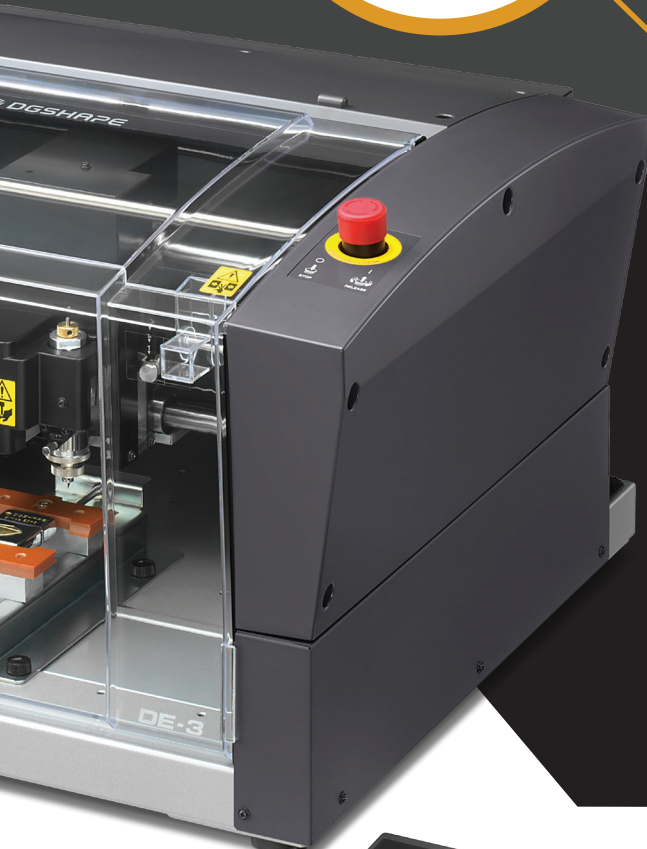


Dr. Engrave Plus



### Open Architecture and New Software

The DE-3 works out-of-the-box with popular engraving software, industry standard tools, and materials. It also features Dr. Engrave Plus software that offers new user advantages.



Supports AI files and standard graphic/vector data.



Import Excel and CSV files for nametags, serial numbers, and other variable data projects.



Enables standard engraving as well as surface levelling and hole drilling.



### Handy Panel Control

Without the need for computer setup, users can store job data and perform machine operations.



### Reliability and Support

As the world leader in desktop rotary engraving devices, Roland DG offers users unmatched product performance and reliability, backed by industry-leading service and support. The DE-3 comes with a comprehensive One-Year Trouble-Free Warranty.



## Desktop Engraver **DE-3**

Featuring laser-pointing technology, ethernet connectivity, automatic depth regulation and other intelligent enhancements, the DE-3 is the smartest, most intuitive desktop rotary engraver on the market.

### Specifications

<b>Work Table Size</b>	12.0079 in x 9.05512 in (305 mm x 230 mm)	
<b>Maximum Work Area (Work Envelope)</b>	X: 12 in (305 mm)	
	Y: 9.1 in (230 mm)	
	Z: 1.6 in (40 mm)	
<b>XYZ Axis Drive System</b>	Stepper motor, 3-axis simultaneous control	
<b>Operating Speed</b>	XY Axis : 0.1~60 mm/sec. Z Axis : 0.1~30mm/sec.	
<b>Software resolution</b>	0.01 mm/step	
<b>Mechanical Resolution</b>	XYZ Axis: 0.00125 mm/step	
<b>Spindle Motor</b>	Brushless DC Motor	
<b>Spindle Speed</b>	5,000~20,000 rpm	
<b>Tool Loading</b>	Cutter Holder, Collet Type	
<b>Maximum Material Thickness</b>	40 mm (38 mm when using the nose cone)	
<b>Connection</b>	USB	
	Ethernet (10 BASE-T/100 BASE-TX)	
<b>Machine Language</b>	RML-1	
<b>Power Supply</b>	<b>Voltage and Frequency</b>	AC100V ± 10%, 50/60Hz (Overvoltage category: Category II, IEC60664-1)
	<b>Rated Current</b>	1.0 A
<b>Power Consumption</b>	80 W	
<b>Operating Noise</b>	While Operating: 60 dB (or less), Standby: 40 dB (or less)	
<b>Machine Weight</b>	75 lbs (35 kg)	
<b>Installation Environment</b>	Indoor use, altitude: 2000 m or less Temperature 5 to 40°C, humidity 35 to 80% (no dew condensation)	
	Environment pollution degree: 2	
<b>Bundled Accessories</b>	Power cord, power adapter, USB cable, nose cone unit (resin/metal components), nose unit set screw (fixing screw, spring), spare set screw (for cutter holder), Solid collet (ø 3.175 mm), spanner wrench, hex wrench, hex driver, adhesive sheet, dust collector adapter, DGS SHAPE Software Package CD, Setup Guide	

### DGS SHAPE by Roland

At the forefront of advanced machine manufacturing for 37-years, Roland continues to provide practical and reliable technology with unmatched service and support.

DGS SHAPE by Roland further builds on this reliability promise by improving user experience with fast and effortless engraving machines, designed for those just starting out and for engraving experts looking for a more intuitive solution.

For detailed features and specifications visit

**Academic Representative:**



**Technology Education Concepts**

1-800-338-2238 | [www.TECedu.com](http://www.TECedu.com) | [info@TECedu.com](mailto:info@TECedu.com)

Get social with us.



FOR MORE INFORMATION OR TO FIND A DEALER NEAR YOU, CALL 800-542-2307 OR VISIT [WWW.ROLANDDGA.COM/DE-3](http://WWW.ROLANDDGA.COM/DE-3)  
 ROLAND DGA CORPORATION | 15363 BARRANCA PARKWAY | IRVINE, CALIFORNIA 92618-2216 | 800.542.2307 | 949.727.2100  
 RDGA-DE3-01 January 2019