

**Roland®**

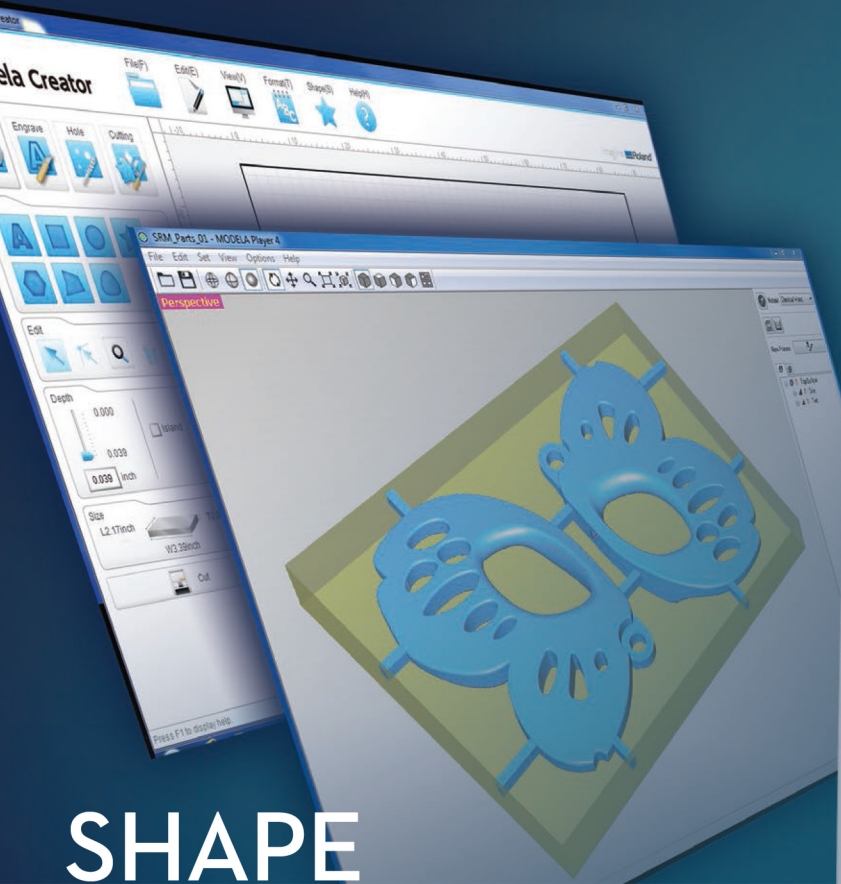


Technology Education Concepts

Roland Authorized Academic Reseller

# monoFab™ SRM-20

Desktop Milling Machine



## SHAPE YOUR IDEAS

### The next evolution in compact milling machines

The SRM-20 is Roland's latest generation desktop milling machine for the office, studio and educational environment. Since pioneering desktop milling in 1986, Roland has continued to perfect our expertise in delivering accuracy and efficiency in a compact format. The SRM-20 incorporates innovative features, including a new spindle, collet, circuit boards and control software. The result is a leap forward in milling precision, speed and ease of use.

The SRM-20 can mill a variety of non-proprietary materials typically used for prototyping, including chemical wood, acrylic and modeling wax. Optional collets are also available to extend the mill's capability with a wide range of end mill shapes and sizes, ideal for creating beautiful finishes and intricate details.



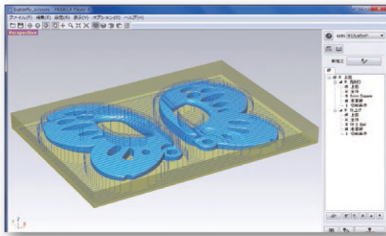
Create functional prototypes  
from a variety of materials.

## Simple operation for optimum results.

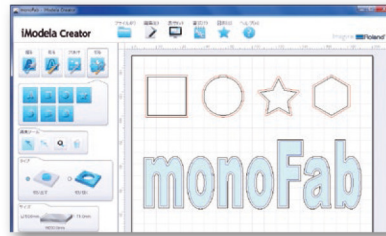
Designed for ease of use, the SRM-20 supports Roland's unique "VPanel," an on-screen operation panel for the computer. By using the speed-controlled 4-way cursor movement, the origin point can be set quickly and accurately. Spindle RPM and milling speed can be altered during milling, allowing full control over the results and milling time.

## 3 types of software included for ease of use, even for beginners.

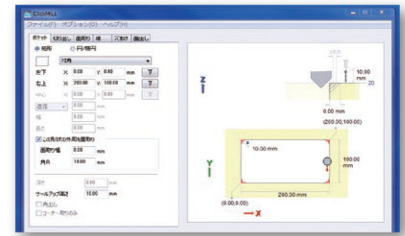
All software can be used individually as needed.



MODELA Player 4 is a CAM software that automatically calculates and displays the cutting tool path from your 3D design file.



iMODELA™ Creator is software for processing 2D data such as text and graphics.



ClickMILL™ is a simple milling solution for surfacing, drilling holes and pocketing without using 3D CAD (Computer Aided Design) software.

## PRODUCT SPECIFICATIONS

MODEL	SRM-20
Cuttable Material	Resins such as chemical wood and modeling wax, substrates for machining
X, Y, and Z Operation Strokes	203.2 (X) x 152.4 (Y) x 60.5 (Z) mm, 8 (X) x 6 (Y) x 2.38 (Z) inches
Workpiece table size	232.2 (X) x 156.6 (Y) mm, 9.14 (X) x 6.17 (Y) inches
Distance From Collet Tip to Table	Maximum, 5.15 in (130.75mm)
Loadable Workpiece Weight	4.4 lbs (2kg)
X-, Y-, and Z-Axis Drive System	Stepping motor
Operating Speed	6 – 1800mm/min (0.24 – 70.87inch/min)
Software Resolution	0.01 mm/step (RML-1), 0.001mm/step (NC code), 0.00039 inches/step (RML-1), 0.000039 inches/step (NC code)
Mechanical Resolution	0.000998594 mm/step, 0.00000393 inches/step
Spindle Motor	DC motor Type 380
Spindle Rotation Speed	Adjustable 3,000 – 7,000 rpm
Cutting Tool Chuck	Collet method
Interface	USB
Control Command Sets	RML-1, NC code
Power Requirements	Machine: DC24V, 2.5A, Dedicated AC adapter: AC 100V±10%, 50/60Hz
Power Consumption	Approx. 50W
Operating Noise	During operation: 65 dB (A) or less (when not cutting), during standby: 45 dB (A) or less
External Dimensions	451.0 (W) x 426.6 (D) x 426.2 (H) mm, 17.76 (W) x 16.80 (D) x 16.78 (H) inches
Weight	19.6 kg, 43.2 lbs
Installation Environment	Temperature of 5 to 40°C (41 to 104 °F), 35 to 80% relative humidity (no condensation)
Included Items	USB cable, AC adapter, Power cord, Cutting tool, Collet, Set screw, Spanners (7,10mm / 0.28, 0.39 inches), Hexagonal wrench (size 2,3 mm / 0.059, 0.12 inches), Positioning pins, Double-sided tape, Start-up page guidance card, [Read first (Booklet)]

## Designed for clean and secure use in your office or classroom

The SRM-20 includes an interlocked full cover and a dust-collection tray to keep your environment clean and clear of waste material. For increased safety, opening the cover automatically stops the machine.



## SYSTEM REQUIREMENTS

MODEL	SRM-20
Operating Systems (OS)	Windows 7/8/8.1 (32-bit/64-bit edition)*
CPU	Intel® Core 2 Duo or more (Core i5 or more recommended)
Memory (RAM)	1GB (2GB or more recommended)
Video Card and Monitor	A resolution of 1,280x1,024 or more recommended
Free Hard-Disk Space Required As A Working Space	100 megabytes or more recommended
Other Requirements	Internet connection and web browser, Internet Explorer version 10 or more recommended

\*Roland OnSupport is a 32-bit application and therefore runs in WOW64 (Windows-On-Windows 64) when running on 64-bit versions of Windows operating systems.

New England & New York Academic Representative:



Technology Education Concepts



Get social with us.



FOR COMPLETE PRODUCT SPECIFICATIONS AND FEATURES, OR MORE INFORMATION, CALL 800-338-2238 OR VISIT [www.TECedu.com](http://www.TECedu.com)

Tech Ed Concepts, Inc. • Authorized Roland Reseller • 32 Commercial St. • Concord, NH 03301 • [info@TECedu.com](mailto:info@TECedu.com)